

Plug & Play Cellular / RF Module

# SINGLE PHASE SMART METER

For Advanced Metering Infrastructure (AMI) systems designed for load management, multi-rate/Time-of-Use, and anti-theft metering of residential and light business users with single-phase service connections, Single Phase Smart Meter is the perfect solution.

On demand or on a set timetable, it measures, gathers, analyses, and regulates energy use and communications with the head-end system. The utilities now have unmatched end-to-end visibility into their distribution networks.



**PREPAID/  
POSTPAID**



**END-TO-END  
SECURITY**



**CONSUMER  
FRIENDLY**



**REMOTE  
UPGRADATION**



**REMOTE DISCONNECT  
& RECONNECT**



**PLUG & PLAY  
COMMUNICATION**

## KEY FEATURE

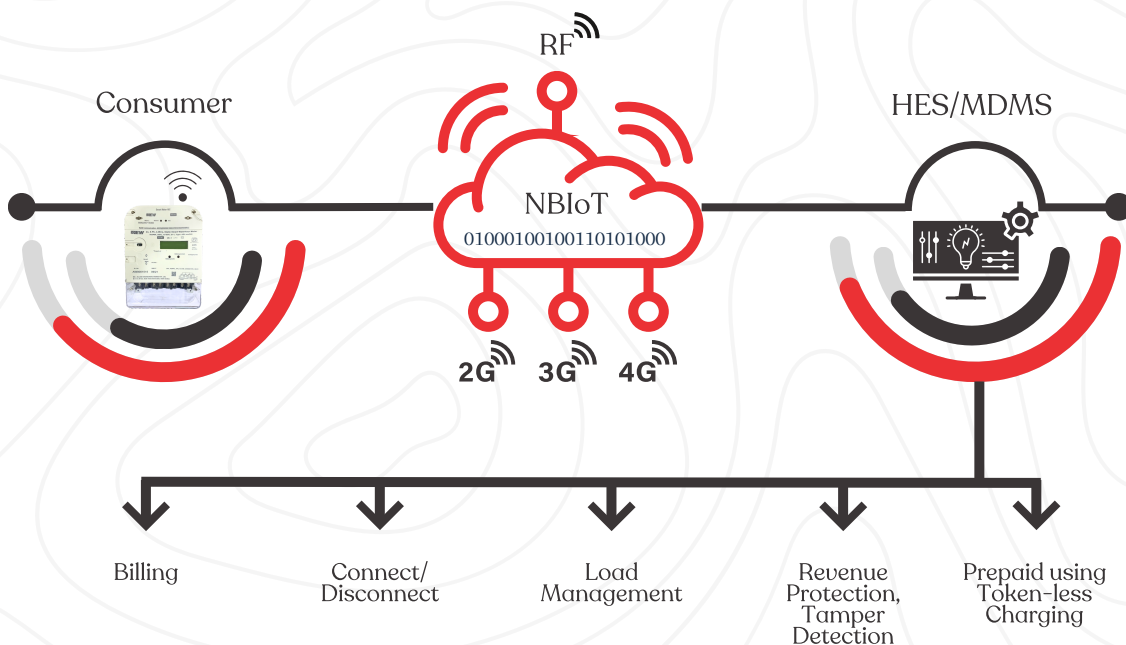
- Smart meter with Single-Phase direct connection
- Change from post-paid to prepaid and back again
- Android App allows users to view information on Consumption
- Measurement of Maximum Demand in kW
- Synchronization of RTC
- Optical port based on the DLMS I COSEM protocol for local communication
- RF/Cellular Replaceable Communication Modem Built-In
- Plug-and-Play installation
- Connect and disconnect remotely
- Two-way communication on demand

## ADUANTAGES

- Lower ownership costs
- Saves money on manual reading
- Better usage data to control energy consumption
- Increased accuracy and billing cycle, thanks to remote reading
- Reduced site opex and time due to fail-safe installation and commissioning procedures
- Remote configuration changes
- Designed for long life in the field

## TECHNICAL SPECIFICATIONS

Standards	IEC62052-11, IEC62053-21 IS 13779, IS 16444, IS 15959, CBIP-325	Display	STN LCD with Backlight
Type of Connection	Single Phase 2 wires direct-connected	LED Indicators	LED Pulse imp/kWh, LED Network status
Metrology Precision	Class-1	Communication Ports	Optical Port IEC 62056-21 Modular GSM/GPRS/2G/3G/4G/NB-IoT Dual Band 900/1800 MHz SIM card exchangeable/replaceable in field
Rated Voltage	230V/240V (-40% to +20%)	Communication Protocol	DLMS COSEM
Rated Current	1b (max)A, =10(60)A, 20(100)A Withstands 120% max	Operating Temperature Range	-10° to +60°C
Starting Current	0.4%Ib	Measurement Energy Type	Active & Reactive
Frequency	50Hz ± 5%	Relative Humidity	Upto 95% Noncondensing
Ingress Protection	IP 53	Degree of Protection	IP 53
Burden-Voltage Circuit	<5W/ 15VA	RTC Type	Crystal or Mains-Synchronized
Burden-Current Circuit	<4VA	NIC	Hot swappable, field inter-changeable, sealed separately
Backup Source	Lithium Battery, 15-Year Life		
Lead Contactor	Latching relaying Three Phase Max Current 120A		



⦿ More features over and above the given features are available based on mutual discussions and technical feasibility.