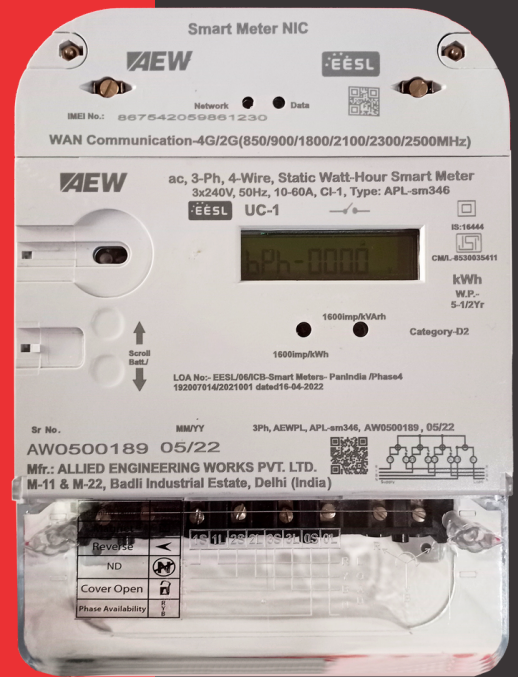


Plug & Play Cellular / RF Module

# THREE PHASE SMART METER

For load management, multi-rate/Time-of-Use, and anti-theft metering of residential and light business users with Three-phase service connections, Our **Three Phase Smart Meter** is a perfect fit for Advance Metering Infrastructure (AMI) systems.

It communicates with the head end system on demand or on a set schedule and measures, collects, evaluates, and manages energy use. Both the utility and the user can benefit from the seamless experience and energy management provided by this.



**PREPAID / POSTPAID**



**END-TO-END SECURITY**



**CONSUMER FRIENDLY**



**REMOTE UPGRADATION**



**REMOTE DISCONNECT & RECONNECT**



**PLUG & PLAY COMMUNICATION**

## KEY FEATURE

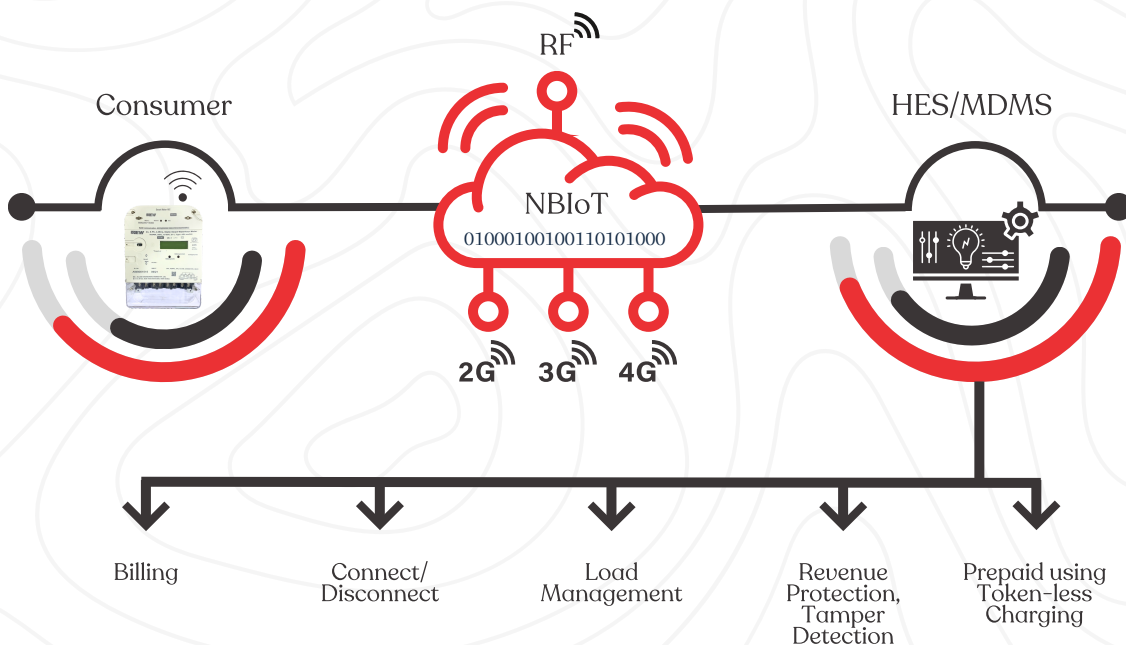
- Smart meter with Three-Phase direct connection
- Change from post-paid to prepaid and back again
- Android App allows users to view information on Consumption
- Measurement of Maximum Demand in kW
- Synchronization of RTC
- Optical port based on the DLMS I COSEM protocol for local communication
- RF/Cellular Replaceable Communication Modem Built-In
- Plug-and-Play installation
- Connect and disconnect remotely
- Two-way communication on demand

## ADVANTAGES

- Lower ownership costs
- Saves money on manual reading
- Better usage data to control energy consumption
- Increased accuracy and billing cycle, thanks to remote reading
- Reduced site opex and time due to fail-safe installation and commissioning procedures
- Remote configuration changes
- Designed for long life in the field

## TECHNICAL SPECIFICATIONS

Standards	IEC62052-11, IEC62053-21 IS 13779, IS 16444, IS 15959, CBIP-325	Display	STN LCD with Backlight
Type of Connection	Three Phase 4 wires direct-connected	LED Indicators	LED Pulse imp/kWh, LED Network status
Metrology Precision	Class-1	Communication Ports	Optical Port IEC 62056-21 Modular GSM/GPRS/2G/3G/4G/NB-IoT Dual Band 900/1800 MHz SIM card exchangeable/replaceable in field
Rated Voltage	230V/240V (-40% to +20%)	Communication Protocol	DLMS COSEM
Rated Current	1b (max)A, =10(60)A, 20(100)A Withstands 120% max	Operating Temperature Range	-10° to +60°C
Starting Current	0.4%Ib	Measurement Energy Type	Active & Reactive
Frequency	50Hz ± 5%	Relative Humidity	Upto 95% Noncondensing
Ingress Protection	IP 53	Degree of Protection	IP 53
Burden-Voltage Circuit	<5W/ 15VA	RTC Type	Crystal or Mains-Synchronized
Burden-Current Circuit	<4VA	NIC	Hot swappable, field inter-changeable, sealed separately
Backup Source	Lithium Battery, 15-Year Life		
Lead Contactor	Latching relaying Three Phase Max Current 120A		



➤ More features over and above the given features are available based on mutual discussions and technical feasibility.